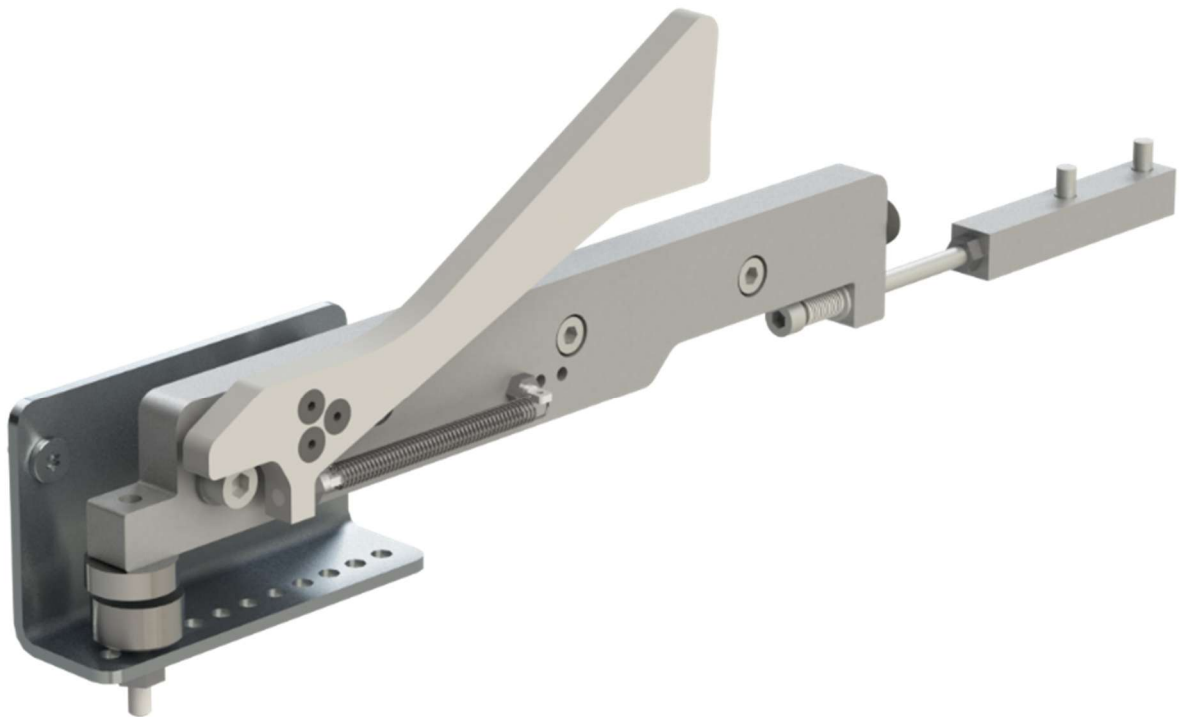




Upgrade & retrofit solution | NPB Distributor

# NPB Wagon Loose Kit

This upgrade improves the performance of the outfeed support finger on the NPB Distributor B and helps reduce spoilage. A small component with a significant impact on increasing production volumes and overall efficiency in the distribution process.



## Enhanced outfeed functionality

Installed on the outfeed of the B-Distributor, the NPB Wagon Loose Kit upgrade addresses a known challenge where ends risk becoming waste falling from the trackwork.

This upgrade reduces spoilage by keeping more ends in the process and stabilizing the outfeed flow. The result is increased machine availability and more predictable operation, achieved through a compact upgrade with a significant impact on overall performance.

## Stable positioning through magnetic technology

The solution features an improved positioning function based on a magnetic principle, which actively holds and positions the support finger in the correct location. This innovative function secures the ends when the robot leaves the stick on the outfeed.

The upgraded design provides a more reliable function with less wear, fewer adjustments, and longer service intervals, resulting in lower maintenance demand and supporting continuous operation.

## High-impact upgrade solution

The NPB Wagon Loose Kit is developed as a dedicated upgrade and retrofit solution for existing installations of NPB Distributor machines.

Four versions are available - Standard and Extended - to match different machine configurations and upgrade from generation 1 or generations 2 and 3.

Installation is quick and straightforward, making it a cost-efficient way to improve performance and reduce spoilage without major modifications or downtime.

## Technical specification

### Options

#### Rebuild kit - Wagon loose Std. (12053800)

NPB Distributor standard

All needed parts to upgrade "Wagon loose" from generation 2-3

#### Rebuild kit - Wagon loose Ext. (12083800)

NPB Distributor extended

All needed parts to upgrade "Wagon loose" from generation 2-3

#### Rebuild kit - Wagon loose Std. (45383810)

NPB Distributor standard

All needed parts to upgrade "Wagon loose" from generation 1, fixed finger

#### Rebuild kit - Wagon loose Ext. (12083802)

NPB Distributor extended

All needed parts to upgrade "Wagon loose" from generation 1, fixed finger



*Installed on the outfeed of the B-Distributor to improve the function of the support finger.*

PART OF THE XANO GROUP



NPB designs, develops and manufactures automation equipment for the packaging industry. We have top-rate expertise in mechanics and design as well as thorough knowledge in the development and manufacturing of automation equipment. The organization is customer-oriented and flexible with the aim to deliver intelligent machines that are simple to handle.

NPB Automation AB  
Industrigatan 14B  
SE-553 02 Jönköping | Sweden  
Phone +46 (0)36 290 76 00  
info@npb.se  
www.npb.se